



WELLHEAD
DISTRIBUTORS
INTERNATIONAL

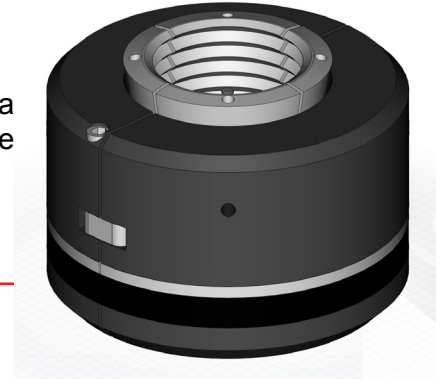
API-6A Wellhead

Casing Hangers

WDI's WC-22 automatic casing hangers (wrap around) incorporate a lower packoff, slip bowl and slips. The lower packoff is energized by the weight for the casing which provides a positive annular seal.

Features

- Heavy duty latch and hinge
- Latch cap screw prevents accidental opening of hanger
- Minimum number of parts
- Packoff is automatically energized with casing



Specifications

Flange Size	Casing Size	Approximate Weight	P/N
11"	4-1/2"	100#	07-22450
11"	5"	95#	07-02197
11"	5-1/2"	89#	07-22550
11"	7"	75#	07-22700
11"	7-5/8"	60#	07-22758
13-5/8"	8-5/8"	125#	07-22858
13-5/8"	9-5/8"	1080#	07-22958